



**Y.V.N.R GOVERNMENT DEGREE COLLEGE**  
Kaikaluru, Krishna Dist., A.P – 521333.  
Affiliated to Krishna University  
NAAC Grade “B+” [GCPA 2.61], ISO Certification 9001: 2015.



Website: [www.yvnrgdc.ac.in](http://www.yvnrgdc.ac.in)

E-mail: [gdcjkc.kaikaluru@gmail.com](mailto:gdcjkc.kaikaluru@gmail.com)

Mobile: +919948422020

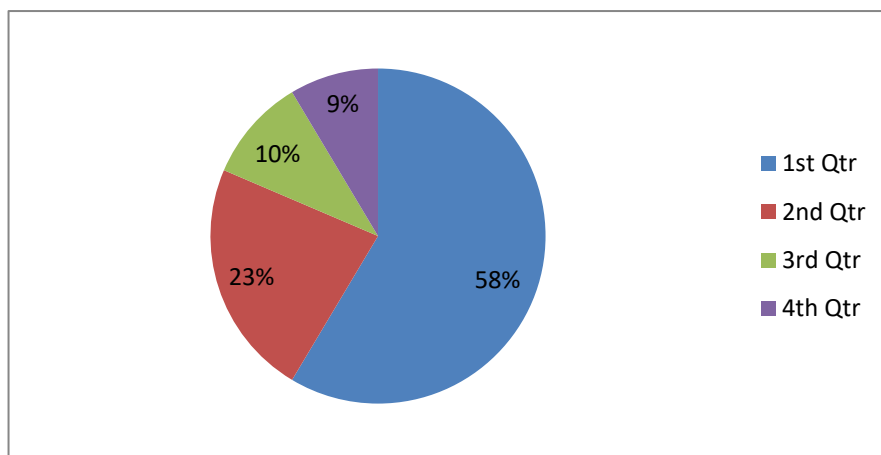
### Student Satisfaction Survey (SSS) (2020-21)

Following are questions for the online student satisfaction survey regarding the teaching-learning process.

1. How much of the syllabus was covered in the class?

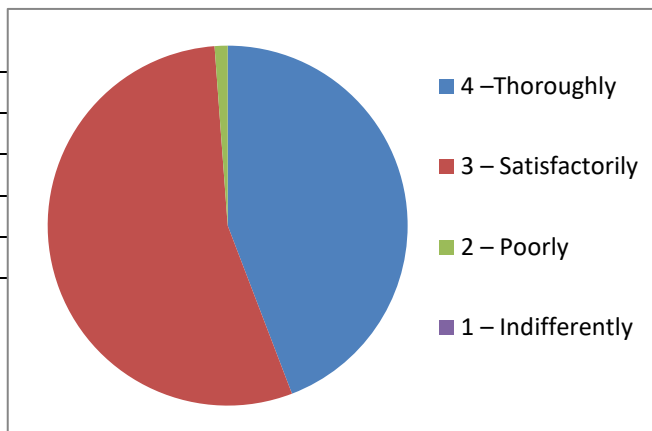
86 RESPONSES

4 - 85 to 100%	76.13%
3 - 70 to 84%	14.77%
2 - 55 to 69%	5.68%
1 - 30 to 54%	1.13%
0 - Below 30%	0



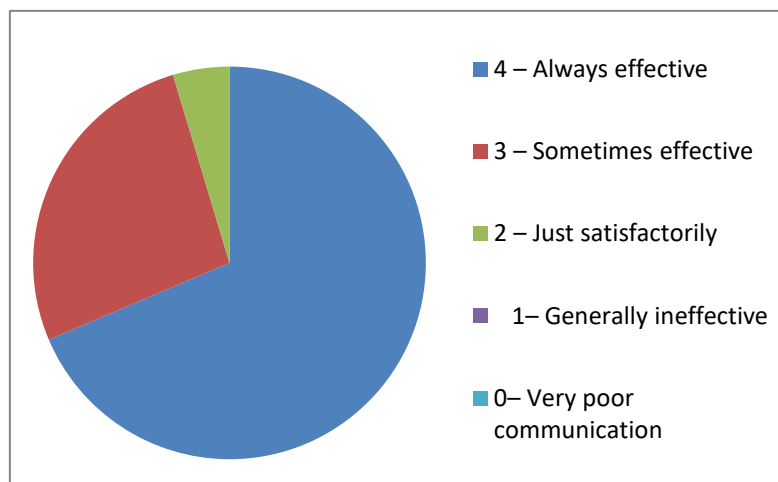
## 2.. How well did the teachers prepare for the classes?

4 –Thoroughly	38
3 – Satisfactorily	47
2 – Poorly	01
1 – Indifferently	0
0 – Won't teach at all	0



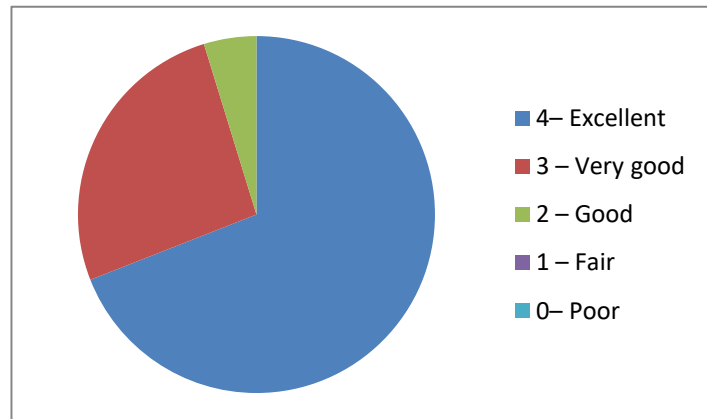
## 3. How well were the teachers able to communicate?

4 – Always effective	59
3 – Sometimes effective	23
2 – Just satisfactorily	04
1– Generally ineffective	0
0– Very poor communication	0



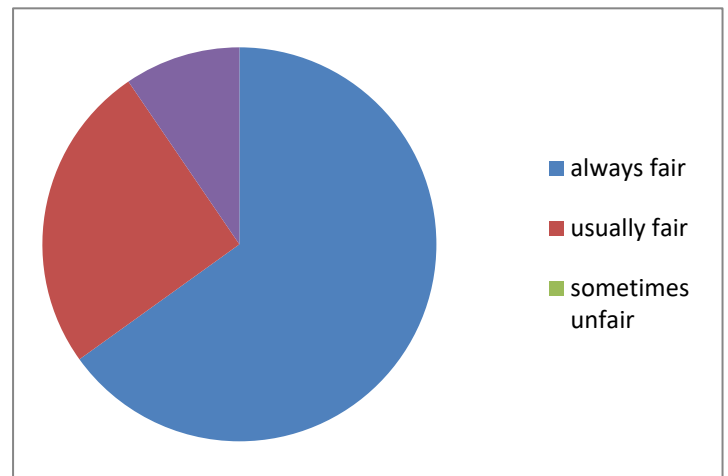
**4. The teacher’s approach to teaching can best be described as**

4– Excellent	58
3 – Very good	22
2 – Good	4
1 – Fair	0
0– Poor	0



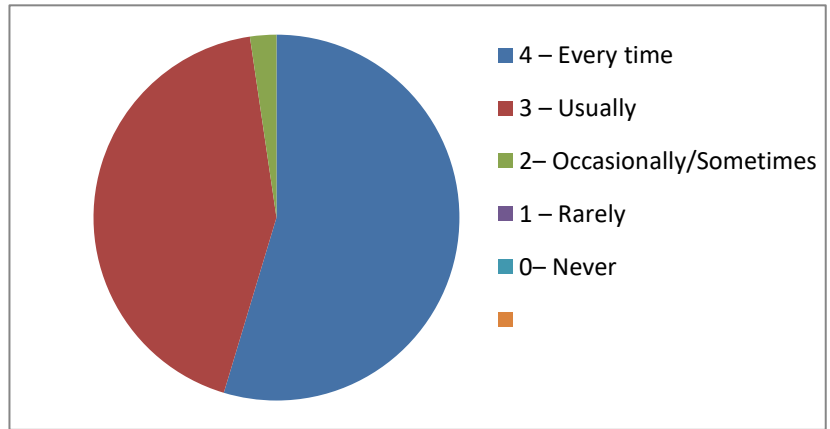
**5. Fairness of the internal evaluation process by the teachers.**

4 – always fair	49
3 – Usually fair	32
2 – Sometimes unfair	05
1 – Usually unfair	0
0 – Unfair	0



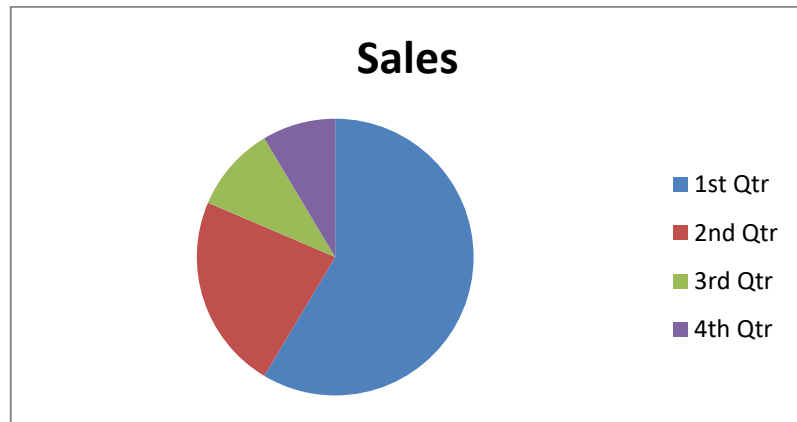
**6. Was your performance in assignments discussed with you?**

4 – Every time	<b>47</b>
3 – Usually	<b>37</b>
2– Occasionally/Sometimes	<b>02</b>
1 – Rarely	<b>0</b>
0– Never	<b>0</b>



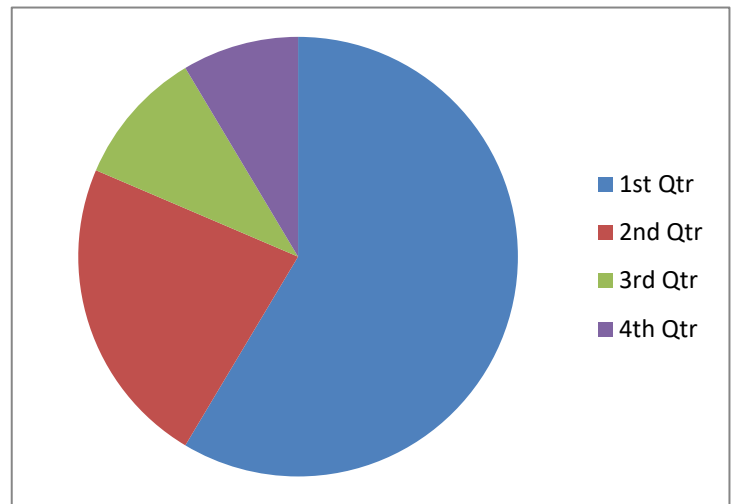
**7. The institute takes active interest in promoting internship, student exchange, field visit opportunities for students.**

4 - regularly	45
3 – Often	27
2 – Sometimes	12
1 – Rarely	0
0– Never	02



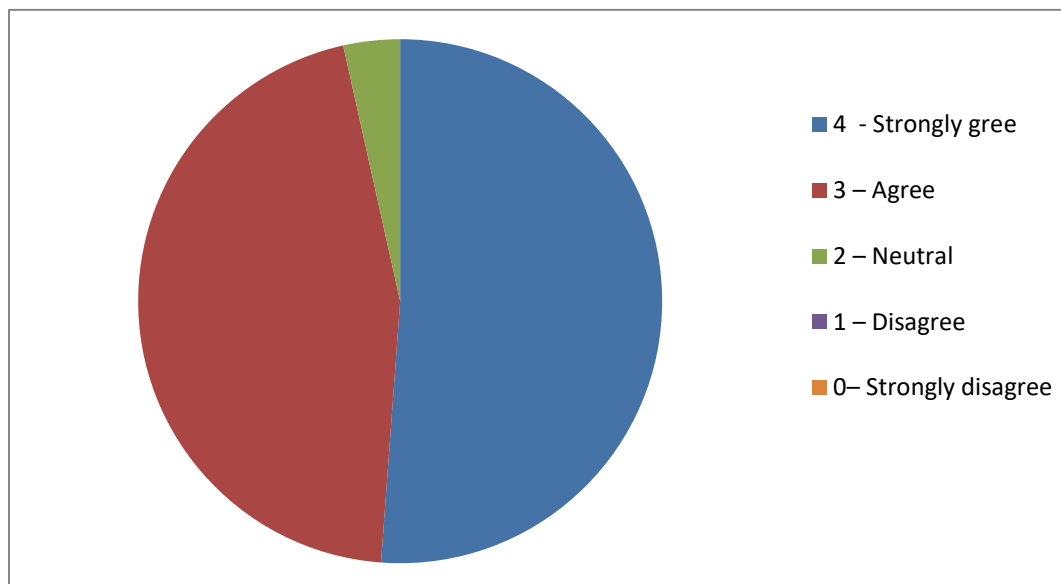
**8. The teaching and mentoring process in your institution facilitates you in cognitive, social and emotional growth.**

4 - Significantly	<b>34</b>
3 – Very well	<b>40</b>
2 – Moderately	<b>12</b>
1 – Marginally	<b>0</b>
0– Not at all	<b>0</b>



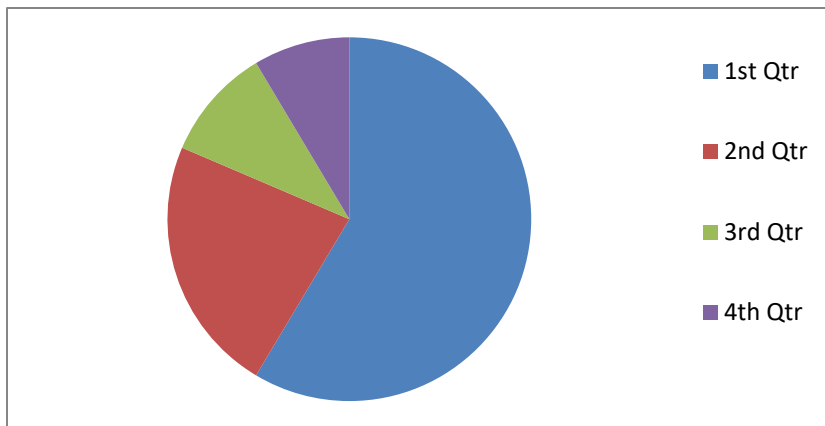
**9. The institution provides multiple opportunities to learn and grow.**

4 - Strongly agree	<b>44</b>
3 – Agree	<b>39</b>
2 – Neutral	<b>03</b>
1 – Disagree	<b>0</b>
0– Strongly disagree	<b>0</b>



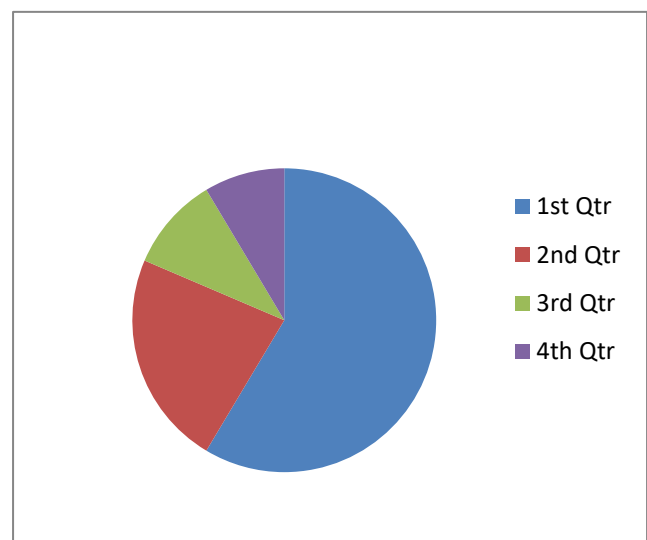
**10. Teachers inform you about your expected competencies, course outcomes and programme outcomes.**

4 - everytime	<b>54</b>
3 – Usually	<b>25</b>
2– Occasionally/Sometimes	<b>07</b>
1 – Rarely	<b>0</b>
0– Never	<b>0</b>



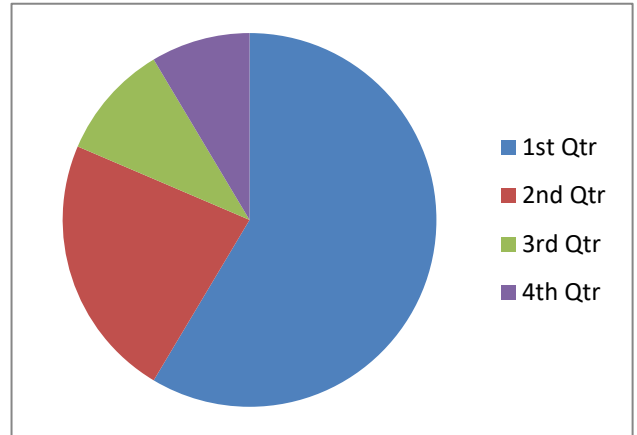
**11. Your mentor does a necessary follow-up with an assigned task to you.**

4 - Everytime	<b>51</b>
3 – Usually	<b>32</b>
2 – Occasionally/Sometimes	<b>03</b>
1 – Rarely	<b>0</b>
0 – I don't have a mentor	<b>0</b>



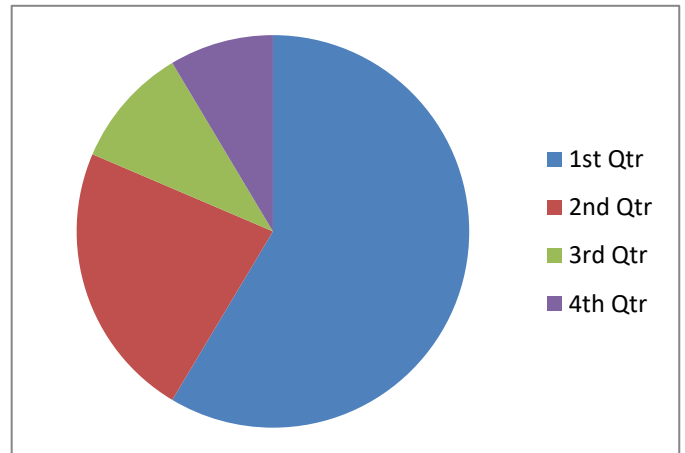
**12. The teachers illustrate the concepts through examples and applications.**

4 - Everytime	<b>54</b>
3 – Usually	<b>27</b>
2 – Occasionally/Sometimes	<b>05</b>
1 – Rarely	<b>0</b>
0 – never	<b>0</b>



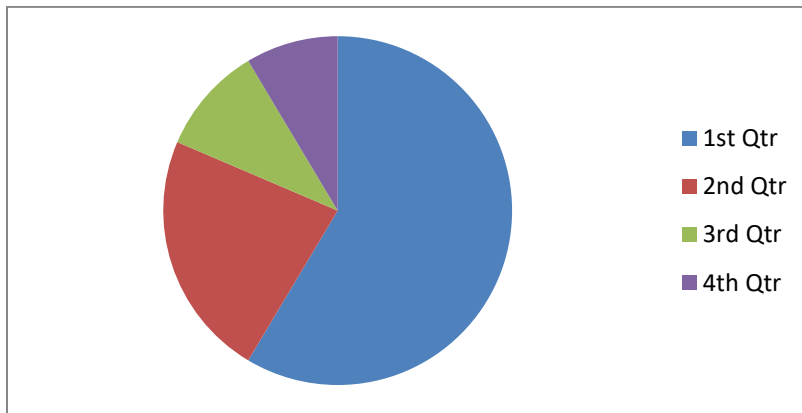
**13. The teachers identify your strengths and encourage you with providing right level of challenges.**

4 - Fully	<b>52</b>
3 – Reasonably	<b>23</b>
2 – Partially	<b>08</b>
1 – Slightly	<b>03</b>
0 – Unable to	<b>0</b>



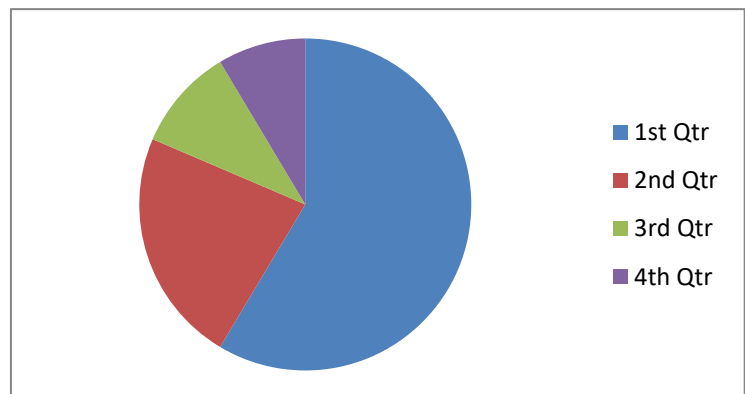
**14. Teachers are able to identify your weaknesses and help you to overcome them.**

4 -Everytime	<b>43</b>
3 – Usually	<b>39</b>
2 – Occasionally/Sometimes	<b>02</b>
1 – Rarely	<b>02</b>
0 – never	<b>0</b>



**15. The institution makes effort to engage students in the monitoring, review and continuous quality improvement of the teaching learning process.**

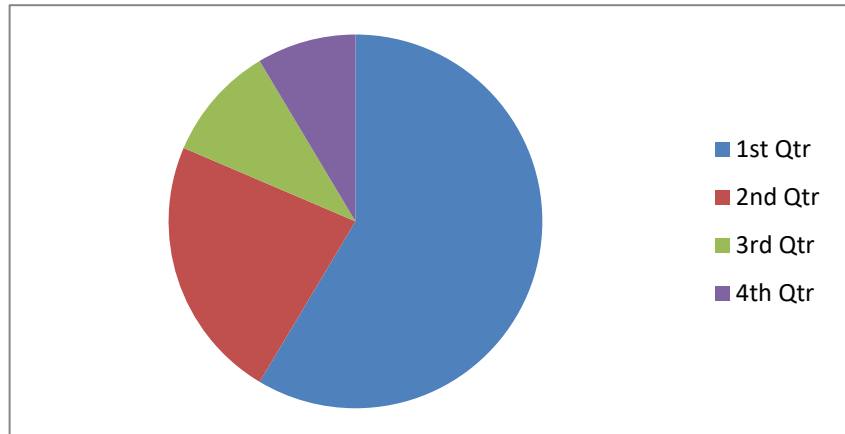
4 – Strongly agree	<b>39</b>
3 – Agree	<b>40</b>
2 – Neutral	<b>06</b>
1 – Disagree	<b>0</b>
0– Strongly disagree	<b>01</b>





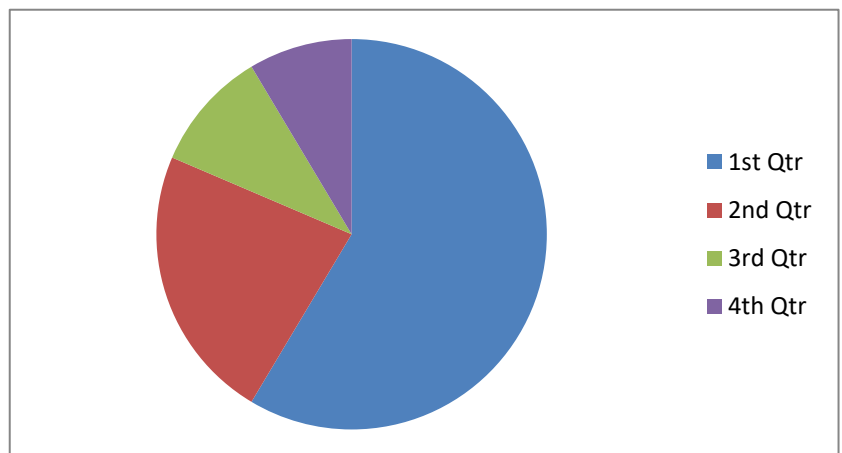
**16. The institute/ teachers use student centric methods, such as experiential learning, participative learning and problem solving methodologies for enhancing learning experiences.**

4 - To a great extent	<b>53</b>
3 – Moderate	<b>27</b>
2 – Some what	<b>04</b>
1 – Very little	<b>0</b>
0 – Not at all	<b>02</b>



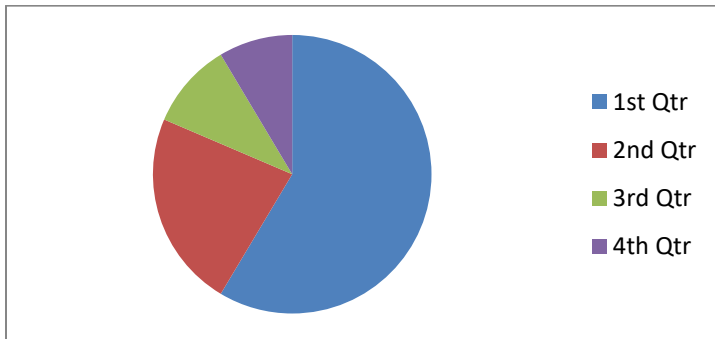
**17. Teachers encourage you to participate in extracurricular activities.**

4 - Strongly agree	50
3 – Agree	26
2 – Disagree	10
1 – Neutral	0
0— Strongly disagree	0



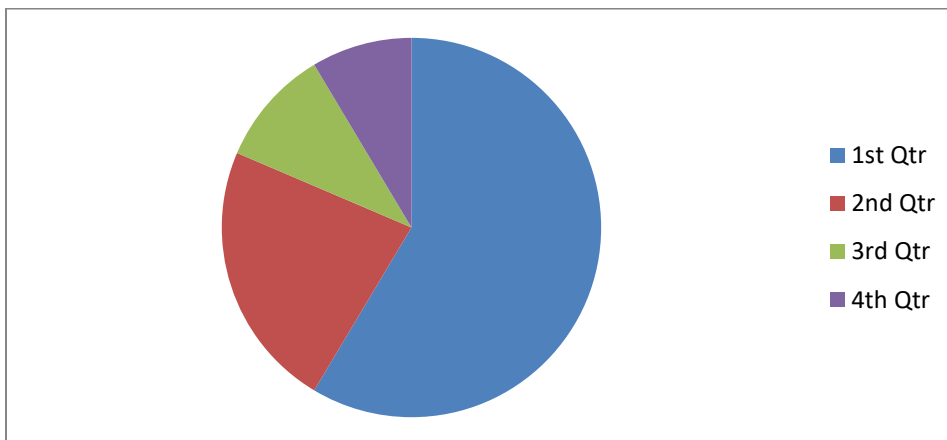
**18. Efforts are made by the institute/ teachers to inculcate soft skills, life skills and employability skills to make you ready for the world of work.**

4 - To a great extent	50
3 – Some what	32
2 – Moderate	03
1 – Very little	01
0— Not at all	0



**19. What percentage of teachers use ICT tools such as LCD projector, Multimedia, etc. while teaching.**

4 – Above 90%	46
3 – 70 – 89%	31
2 – 50 – 69%	05
1 – 30 – 49%	04
0— Below 29%	0



**20. The overall quality of teaching-learning process in your institute is very good.**

4 –Strongly agree	60
3 – Agree	26
2 – Disagree	0
1 – Neutral	0
0— Strongly disagree	0

